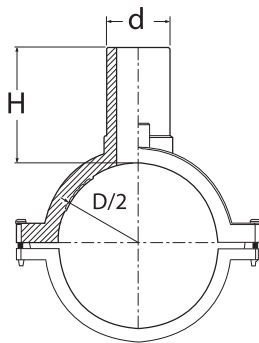


SDR11 ELECTROFUSION SMALL BRANCH SADDLES

Water - 240 PSI at 73 Deg F Sustainable Maximum Operating Pressure

Gas - 150 PSI at 73 Deg F Sustainable Maximum Operating Pressure

- Suitable for Water, Fluids & Slurry's
- Engineered for PE3408, PE4710 & PE100 HDPE Pipe Systems
- Manufactured in accordance with ASTM F-714, ASTM F-1055, ASTM D-2513, ASTM D-3035, ASTM D-3261, ASTM D-3350, AWWA C-901, AWWA C-906, DIN16963, EN1555, EN12201



TYPE A



TYPE B



TYPE C



TYPE D

BASE (D)	BASE NORM	OUTLET (d)	OUTLET NORM	H	Unit Weight in lbs	Type	Item Code
1 1/4"	IPS	1/2"	CTS	2,95	0,32	A	30.BS1.13.11.4215
1 1/4"	IPS	1/2"	IPS	2,95	0,33	A	30.BS1.11.11.4221
1 1/4"	IPS	3/4"	CTS	2,95	0,33	A	30.BS1.13.11.4222
1 1/4"	IPS	3/4"	IPS	2,95	0,36	A	30.BS1.11.11.4226
1 1/4"	IPS	1"	CTS	2,95	0,39	A	30.BS1.13.11.4228
1 1/4"	IPS	1"	IPS	2,95	0,40	A	30.BS1.11.11.4233
1 1/2"	IPS	1/2"	CTS	2,95	0,33	A	30.BS1.13.11.4815
1 1/2"	IPS	1/2"	IPS	2,95	0,35	A	30.BS1.11.11.4821
1 1/2"	IPS	3/4"	CTS	2,95	0,36	A	30.BS1.13.11.4822
1 1/2"	IPS	3/4"	IPS	2,95	0,37	A	30.BS1.11.11.4826
1 1/2"	IPS	1"	CTS	2,95	0,37	A	30.BS1.13.11.4828
1 1/2"	IPS	1"	IPS	2,95	0,41	A	30.BS1.11.11.4833
1 1/2"	IPS	1 1/4"	CTS	2,95	0,41	A	30.BS1.13.11.4834
2"	IPS	1/2"	CTS	3,03	0,77	A	30.BS1.13.11.6015
2"	IPS	1/2"	IPS	3,03	0,77	A	30.BS1.11.11.6021
2"	IPS	3/4"	CTS	3,03	0,77	A	30.BS1.13.11.6022
2"	IPS	3/4"	IPS	3,03	0,79	A	30.BS1.11.11.6026
2"	IPS	1"	CTS	3,03	0,79	A	30.BS1.13.11.6028
2"	IPS	1"	IPS	3,03	0,86	A	30.BS1.11.11.6033
2"	IPS	1 1/4"	IPS	3,03	0,88	B	30.BS1.11.11.6042

SDR11 ELECTROFUSION SMALL BRANCH SADDLES

Water - 240 PSI at 73 Deg F Sustainable Maximum Operating Pressure

Gas - 150 PSI at 73 Deg F Sustainable Maximum Operating Pressure

- Suitable for Water, Fluids & Slurry's
- Engineered for PE3408, PE4710 & PE100 HDPE Pipe Systems
- Manufactured in accordance with

ASTM F-714, ASTM F-1055, ASTM D-2513, ASTM D-3035, ASTM D-3261, ASTM D-3350, AWWA C-901, AWWA C-906, DIN16963, EN1555, EN12201

BASE (D)	BASE NORM	OUTLET (d)	OUTLET NORM	H	Unit Weight in lbs	Type	Item Code
2"	IPS	1 1/4"	CTS	3,03	0,86	A	30.BS1.13.11.6034
2"	IPS	1 1/2"	IPS	4,92	1,65	B	30.BS1.11.11.6048
2"	IPS	2"	IPS	4,92	1,76	B	30.BS1.11.11.6060
3"	IPS	1/2"	CTS	3,74	1,46	A	30.BS1.13.11.8815
3"	IPS	1/2"	IPS	3,74	1,46	A	30.BS1.11.11.8821
3"	IPS	3/4"	CTS	3,74	1,46	A	30.BS1.13.11.8822
3"	IPS	3/4"	IPS	3,74	1,50	A	30.BS1.11.11.8826
3"	IPS	1"	CTS	3,74	1,50	A	30.BS1.13.11.8828
3"	IPS	1"	IPS	3,74	1,52	A	30.BS1.11.11.8833
3"	IPS	1 1/4"	IPS	3,74	1,54	A	30.BS1.11.11.8842
3"	IPS	1 1/4"	CTS	3,74	1,52	A	30.BS1.13.11.8834
3"	IPS	1 1/2"	IPS	5,31	1,57	A	30.BS1.11.11.8848
3"	IPS	2"	IPS	5,31	1,59	A	30.BS1.11.11.8860
4"	IPS	1/2"	CTS	3,74	1,61	A	30.BS1.13.11.1115
4"	IPS	1/2"	IPS	3,74	1,61	A	30.BS1.11.11.1121
4"	IPS	3/4"	CTS	3,74	1,61	A	30.BS1.13.11.1122
4"	IPS	3/4"	IPS	3,74	1,63	A	30.BS1.11.11.1126
4"	IPS	1"	CTS	3,74	1,63	A	30.BS1.13.11.1128
4"	IPS	1"	IPS	3,74	1,65	A	30.BS1.11.11.1133
4"	IPS	1 1/4"	IPS	3,74	1,68	A	30.BS1.11.11.1142
4"	IPS	1 1/4"	CTS	3,74	1,65	A	30.BS1.13.11.1134
4"	IPS	1 1/2"	IPS	5,31	1,70	A	30.BS1.11.11.1148
4"	IPS	2"	IPS	5,31	1,72	A	30.BS1.11.11.1160
6"	IPS	1/2"	CTS	3,74	2,05	C	30.BS1.13.11.1615
6"	IPS	1/2"	IPS	3,74	2,05	C	30.BS1.11.11.1621
6"	IPS	3/4"	CTS	3,74	2,05	C	30.BS1.13.11.1622
6"	IPS	3/4"	IPS	3,74	2,09	C	30.BS1.11.11.1626
6"	IPS	1"	CTS	3,74	2,09	C	30.BS1.13.11.1628
6"	IPS	1"	IPS	3,74	2,12	C	30.BS1.11.11.1633
6"	IPS	1 1/4"	IPS	3,74	2,14	C	30.BS1.11.11.1642
6"	IPS	1 1/4"	CTS	3,74	2,12	C	30.BS1.13.11.1634
6"	IPS	1 1/2"	IPS	5,31	2,20	C	30.BS1.11.11.1648
6"	IPS	2"	IPS	5,31	2,23	C	30.BS1.11.11.1660
8"	IPS	1/2"	CTS	3,74	1,98	C	30.BS1.13.11.2115
8"	IPS	1/2"	IPS	3,74	1,98	C	30.BS1.11.11.2121
8"	IPS	3/4"	CTS	3,74	1,98	C	30.BS1.13.11.2122
8"	IPS	3/4"	IPS	3,74	2,01	C	30.BS1.11.11.2126
8"	IPS	1"	CTS	3,74	2,01	C	30.BS1.13.11.2128
8"	IPS	1"	IPS	3,74	2,03	C	30.BS1.11.11.2133
8"	IPS	1 1/4"	IPS	3,74	2,05	C	30.BS1.11.11.2142
8"	IPS	1 1/4"	CTS	3,74	2,03	C	30.BS1.13.11.2134
8"	IPS	1 1/2"	IPS	5,31	2,07	C	30.BS1.11.11.2148



SDR11 ELECTROFUSION SMALL BRANCH SADDLES

Water - 240 PSI at 73 Deg F Sustainable Maximum Operating Pressure

Gas - 150 PSI at 73 Deg F Sustainable Maximum Operating Pressure

- Suitable for Water, Fluids & Slurry's
- Engineered for PE3408, PE4710 & PE100 HDPE Pipe Systems
- Manufactured in accordance with

ASTM F-714, ASTM F-1055, ASTM D-2513, ASTM D-3035, ASTM D-3261, ASTM D-3350, AWWA C-901, AWWA C-906, DIN16963, EN1555, EN12201

BASE (D)	BASE NORM	OUTLET (d)	OUTLET NORM	H	Unit Weight in lbs	Type	Item Code
8"	IPS	2"	IPS	5,31	2,09	C	30.BS1.11.11.2160
10"	IPS	1/2"	CTS	3,94	1,46	D	30.BS1.13.11.2715
10"	IPS	1/2"	IPS	3,94	1,46	D	30.BS1.11.11.2721
10"	IPS	3/4"	CTS	3,94	1,46	D	30.BS1.13.11.2722
10"	IPS	3/4"	IPS	3,94	1,46	D	30.BS1.11.11.2726
10"	IPS	1"	CTS	3,94	1,46	D	30.BS1.13.11.2728
10"	IPS	1"	IPS	5,12	1,48	D	30.BS1.11.11.2733
10"	IPS	1 1/4"	IPS	4,13	1,50	D	30.BS1.11.11.2742
10"	IPS	1 1/4"	CTS	5,12	1,48	D	30.BS1.13.11.2734
10"	IPS	1 1/2"	IPS	5,12	1,50	D	30.BS1.11.11.2748
10"	IPS	2"	IPS	4,92	1,50	D	30.BS1.11.11.2760
12"	IPS	1/2"	CTS	3,94	1,48	D	30.BS1.13.11.3215
12"	IPS	1/2"	IPS	3,94	1,48	D	30.BS1.11.11.3221
12"	IPS	3/4"	CTS	3,94	1,48	D	30.BS1.13.11.3222
12"	IPS	3/4"	IPS	3,94	1,50	D	30.BS1.11.11.3226
12"	IPS	1"	CTS	3,94	1,50	D	30.BS1.13.11.3228
12"	IPS	1"	IPS	5,12	1,52	D	30.BS1.11.11.3233
12"	IPS	1 1/4"	IPS	4,13	1,54	D	30.BS1.11.11.3242
12"	IPS	1 1/4"	CTS	5,12	1,52	D	30.BS1.13.11.3234
12"	IPS	1 1/2"	IPS	5,12	1,54	D	30.BS1.11.11.3248
12"	IPS	2"	IPS	4,92	1,54	D	30.BS1.11.11.3260
14"	IPS	1/2"	CTS	3,94	1,68	D	30.BS1.13.11.3515
14"	IPS	1/2"	IPS	3,94	1,68	D	30.BS1.11.11.3521
14"	IPS	3/4"	CTS	3,94	1,68	D	30.BS1.13.11.3522
14"	IPS	3/4"	IPS	3,94	1,70	D	30.BS1.11.11.3526
14"	IPS	1"	CTS	3,94	1,70	D	30.BS1.13.11.3528
14"	IPS	1"	IPS	5,12	1,72	D	30.BS1.11.11.3533
14"	IPS	1 1/4"	IPS	4,13	1,68	D	30.BS1.11.11.3542
14"	IPS	1 1/4"	CTS	5,12	1,72	D	30.BS1.13.11.3534
14"	IPS	1 1/2"	IPS	5,12	1,70	D	30.BS1.11.11.3548
14"	IPS	2"	IPS	4,92	1,72	D	30.BS1.11.11.3560
16"	IPS	1/2"	CTS	3,94	0,95	E	30.BS1.13.11.4015
16"	IPS	1/2"	IPS	3,94	0,95	E	30.BS1.11.11.4021
16"	IPS	3/4"	CTS	3,94	0,95	E	30.BS1.13.11.4022
16"	IPS	3/4"	IPS	3,94	0,97	E	30.BS1.11.11.4026
16"	IPS	1"	CTS	3,94	0,97	E	30.BS1.13.11.4028
16"	IPS	1"	IPS	5,12	0,99	E	30.BS1.11.11.4033
16"	IPS	1 1/4"	IPS	4,13	1,01	E	30.BS1.11.11.4042
16"	IPS	1 1/4"	CTS	5,12	0,99	E	30.BS1.13.11.4034
16"	IPS	1 1/2"	IPS	5,12	1,15	E	30.BS1.11.11.4048
16"	IPS	2"	IPS	4,92	1,15	E	30.BS1.11.11.4060
18"	IPS	1/2"	CTS	3,94	0,95	E	30.BS1.13.11.4515
18"	IPS	1/2"	IPS	3,94	0,95	E	30.BS1.11.11.4521
18"	IPS	3/4"	CTS	3,94	0,95	E	30.BS1.13.11.4522
18"	IPS	3/4"	IPS	3,94	0,97	E	30.BS1.11.11.4526
18"	IPS	1"	CTS	3,94	0,97	E	30.BS1.13.11.4528
18"	IPS	1"	IPS	5,12	0,99	E	30.BS1.11.11.4533
18"	IPS	1 1/4"	IPS	4,13	1,01	E	30.BS1.11.11.4542
18"	IPS	1 1/4"	CTS	5,12	0,99	E	30.BS1.13.11.4534
18"	IPS	1 1/2"	IPS	5,12	1,15	E	30.BS1.11.11.4548

EF METRIK
EF METRIC

EF INCH

SPIGOT
SPIGOT

VANA
VALVE

MAKINE VE APARAT
MACHINES & TOOL

MONTAJ
INSTALLATION

TEKNIK
TECHNICAL

SDR11 ELECTROFUSION SMALL BRANCH SADDLES
Water - 240 PSI at 73 Deg F Sustainable Maximum Operating Pressure

Gas - 150 PSI at 73 Deg F Sustainable Maximum Operating Pressure

- Suitable for Water, Fluids & Slurry's
- Engineered for PE3408, PE4710 & PE100 HDPE Pipe Systems
- Manufactured in accordance with

 ASTM F-714, ASTM F-1055, ASTM D-2513, ASTM D-3035, ASTM D-3261,
 ASTM D-3350, AWWA C-901, AWWA C-906, DIN16963, EN1555, EN12201

BASE (D)	BASE NORM	OUTLET (d)	OUTLET NORM	H	Unit Weight in lbs	Type	Item Code
18"	IPS	2"	IPS	4,92	1,15	E	30.BS1.11.11.4560
3"	DIPS	1/2"	CTS	3,74	1,61	B	30.BS1.23.11.1015
3"	DIPS	1/2"	IPS	3,74	1,61	B	30.BS1.21.11.1021
3"	DIPS	3/4"	CTS	3,74	1,61	B	30.BS1.23.11.1022
3"	DIPS	3/4"	IPS	3,74	1,63	B	30.BS1.21.11.1026
3"	DIPS	1"	CTS	3,74	1,63	B	30.BS1.23.11.1028
3"	DIPS	1"	IPS	3,74	1,65	B	30.BS1.21.11.1033
3"	DIPS	1 1/4"	IPS	3,74	1,68	B	30.BS1.21.11.1042
3"	DIPS	1 1/4"	CTS	3,74	1,65	B	30.BS1.23.11.1034
3"	DIPS	1 1/2"	IPS	5,31	1,70	B	30.BS1.21.11.1048
3"	DIPS	2"	IPS	5,31	1,72	B	30.BS1.21.11.1060
4"	DIPS	1/2"	CTS	3,74	1,65	B	30.BS1.23.11.1215
4"	DIPS	1/2"	IPS	3,74	1,65	B	30.BS1.21.11.1221
4"	DIPS	3/4"	CTS	3,74	1,65	B	30.BS1.23.11.1222
4"	DIPS	3/4"	IPS	3,74	1,65	B	30.BS1.21.11.1226
4"	DIPS	1"	CTS	3,74	1,65	B	30.BS1.23.11.1228
4"	DIPS	1"	IPS	3,74	1,68	B	30.BS1.21.11.1233
4"	DIPS	1 1/4"	IPS	3,74	1,72	B	30.BS1.21.11.1242
4"	DIPS	1 1/4"	CTS	3,74	1,68	B	30.BS1.23.11.1234
4"	DIPS	1 1/2"	IPS	5,31	1,74	B	30.BS1.21.11.1248
4"	DIPS	2"	IPS	5,31	1,76	B	30.BS1.21.11.1260
6"	DIPS	1/2"	CTS	3,74	2,05	C	30.BS1.23.11.1715
6"	DIPS	1/2"	IPS	3,74	2,05	C	30.BS1.21.11.1721
6"	DIPS	3/4"	CTS	3,74	2,05	C	30.BS1.23.11.1722
6"	DIPS	3/4"	IPS	3,74	2,09	C	30.BS1.21.11.1726
6"	DIPS	1"	CTS	3,74	2,09	C	30.BS1.23.11.1728
6"	DIPS	1"	IPS	3,74	2,12	C	30.BS1.21.11.1733
6"	DIPS	1 1/4"	IPS	3,74	2,14	C	30.BS1.21.11.1742
6"	DIPS	1 1/4"	CTS	3,74	2,12	C	30.BS1.23.11.1734
6"	DIPS	1 1/2"	IPS	5,31	2,20	C	30.BS1.21.11.1748
6"	DIPS	2"	IPS	5,31	2,23	C	30.BS1.21.11.1760
8"	DIPS	1/2"	CTS	3,94	1,98	C	30.BS1.23.11.2215
8"	DIPS	1/2"	IPS	3,94	1,98	C	30.BS1.21.11.2221
8"	DIPS	3/4"	CTS	3,94	1,98	C	30.BS1.23.11.2222
8"	DIPS	3/4"	IPS	3,94	2,01	C	30.BS1.21.11.2226
8"	DIPS	1"	CTS	3,94	2,01	C	30.BS1.23.11.2228
8"	DIPS	1"	IPS	5,12	2,03	C	30.BS1.21.11.2233
8"	DIPS	1 1/4"	IPS	4,13	2,05	C	30.BS1.21.11.2242
8"	DIPS	1 1/4"	CTS	5,12	2,03	C	30.BS1.23.11.2234
8"	DIPS	1 1/2"	IPS	5,12	2,07	C	30.BS1.21.11.2248
8"	DIPS	2"	IPS	4,92	2,09	C	30.BS1.21.11.2260
10"	DIPS	1/2"	CTS	3,94	1,46	D	30.BS1.23.11.2815

SDR11 ELECTROFUSION SMALL BRANCH SADDLES

Water - 240 PSI at 73 Deg F Sustainable Maximum Operating Pressure

Gas - 150 PSI at 73 Deg F Sustainable Maximum Operating Pressure

- Suitable for Water, Fluids & Slurry's
- Engineered for PE3408, PE4710 & PE100 HDPE Pipe Systems
- Manufactured in accordance with

ASTM F-714, ASTM F-1055, ASTM D-2513, ASTM D-3035, ASTM D-3261, ASTM D-3350, AWWA C-901, AWWA C-906, DIN16963, EN1555, EN12201

BASE (D)	BASE NORM	OUTLET (d)	OUTLET NORM	H	Unit Weight in lbs	Type	Item Code
10"	DIPS	1/2"	IPS	3,94	1,46	D	30.BS1.21.11.2821
10"	DIPS	3/4"	CTS	3,94	1,46	D	30.BS1.23.11.2822
10"	DIPS	3/4"	IPS	3,94	1,46	D	30.BS1.21.11.2826
10"	DIPS	1"	CTS	3,94	1,46	D	30.BS1.23.11.2828
10"	DIPS	1"	IPS	5,12	1,48	D	30.BS1.21.11.2833
10"	DIPS	1 1/4"	IPS	4,13	1,50	D	30.BS1.21.11.2842
10"	DIPS	1 1/4"	CTS	5,12	1,48	D	30.BS1.23.11.2834
10"	DIPS	1 1/2"	IPS	5,12	1,50	D	30.BS1.21.11.2848
10"	DIPS	2"	IPS	4,92	1,50	D	30.BS1.21.11.2860
12"	DIPS	1/2"	CTS	3,94	1,68	D	30.BS1.23.11.3315
12"	DIPS	1/2"	IPS	3,94	1,68	D	30.BS1.21.11.3321
12"	DIPS	3/4"	CTS	3,94	1,68	D	30.BS1.23.11.3322
12"	DIPS	3/4"	IPS	3,94	1,70	D	30.BS1.21.11.3326
12"	DIPS	1"	CTS	3,94	1,70	D	30.BS1.23.11.3328
12"	DIPS	1"	IPS	5,12	1,72	D	30.BS1.21.11.3333
12"	DIPS	1 1/4"	IPS	4,13	1,68	D	30.BS1.21.11.3342
12"	DIPS	1 1/4"	CTS	5,12	1,72	D	30.BS1.23.11.3334
12"	DIPS	1 1/2"	IPS	5,12	1,70	D	30.BS1.21.11.3348
12"	DIPS	2"	IPS	4,92	1,72	D	30.BS1.21.11.3360
14"	DIPS	1/2"	CTS	3,94	0,95	E	30.BS1.23.11.3815
14"	DIPS	1/2"	IPS	3,94	0,95	E	30.BS1.21.11.3821
14"	DIPS	3/4"	CTS	3,94	0,95	E	30.BS1.23.11.3822
14"	DIPS	3/4"	IPS	3,94	0,97	E	30.BS1.21.11.3826
14"	DIPS	1"	CTS	3,94	0,97	E	30.BS1.23.11.3828
14"	DIPS	1"	IPS	5,12	0,99	E	30.BS1.21.11.3833
14"	DIPS	1 1/4"	IPS	4,13	1,01	E	30.BS1.21.11.3842
14"	DIPS	1 1/4"	CTS	5,12	0,99	E	30.BS1.23.11.3834
14"	DIPS	1 1/2"	IPS	5,12	1,15	E	30.BS1.21.11.3848
14"	DIPS	2"	IPS	4,92	1,15	E	30.BS1.21.11.3860
16"	DIPS	1/2"	CTS	3,94	0,95	E	30.BS1.23.11.4415
16"	DIPS	1/2"	IPS	3,94	0,95	E	30.BS1.21.11.4421
16"	DIPS	3/4"	CTS	3,94	0,95	E	30.BS1.23.11.4422
16"	DIPS	3/4"	IPS	3,94	0,97	E	30.BS1.21.11.4426
16"	DIPS	1"	CTS	3,94	0,97	E	30.BS1.23.11.4428
16"	DIPS	1"	IPS	5,12	0,99	E	30.BS1.21.11.4433
16"	DIPS	1 1/4"	IPS	4,13	1,01	E	30.BS1.21.11.4442
16"	DIPS	1 1/4"	CTS	5,12	0,99	E	30.BS1.23.11.4434
16"	DIPS	1 1/2"	IPS	5,12	1,15	E	30.BS1.21.11.4448
16"	DIPS	2"	IPS	4,92	1,15	E	30.BS1.21.11.4460